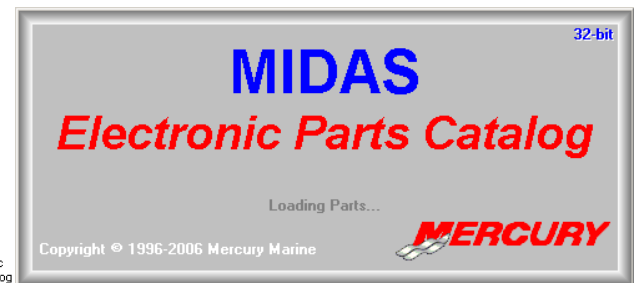
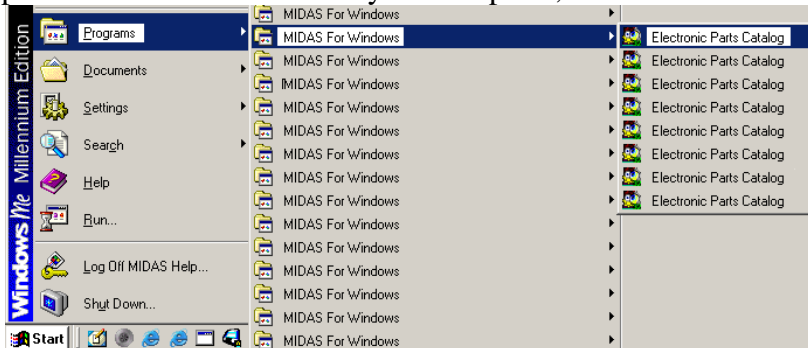




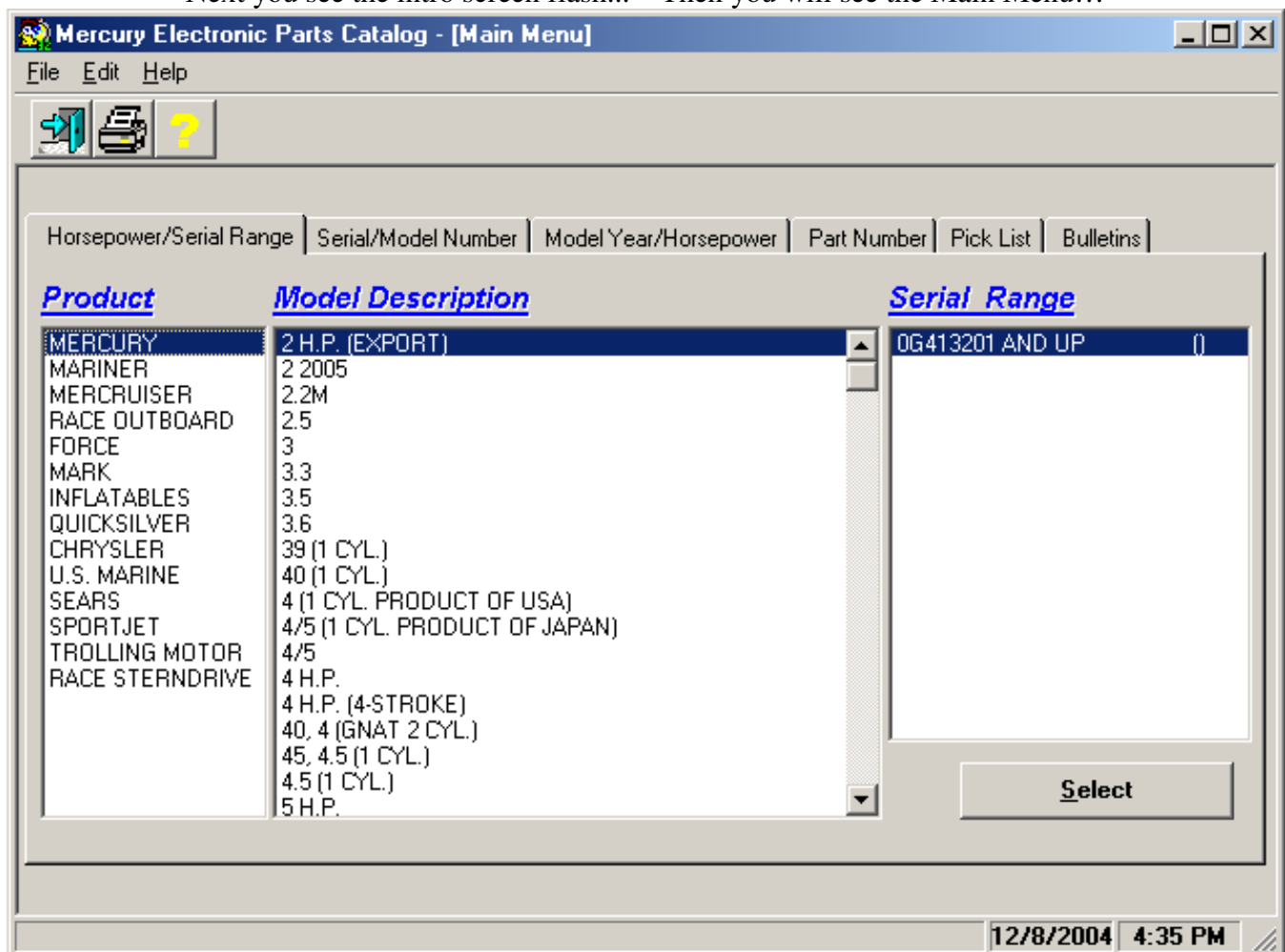
Huggins Outboard - 7524 South Tanglewild Drive - Raleigh, NC 27613 - (919) 787-1836 - (919) 787-1890 fax  
[www.hugginsweb.com](http://www.hugginsweb.com) [www.hug911.com](http://www.hug911.com) [robert@hugginsweb.com](mailto:robert@hugginsweb.com)

## How does the Huggins Outboard Marine Cross Reference (XREF) work with Mercury Marine's Electronic Parts Catalog (EPC)?

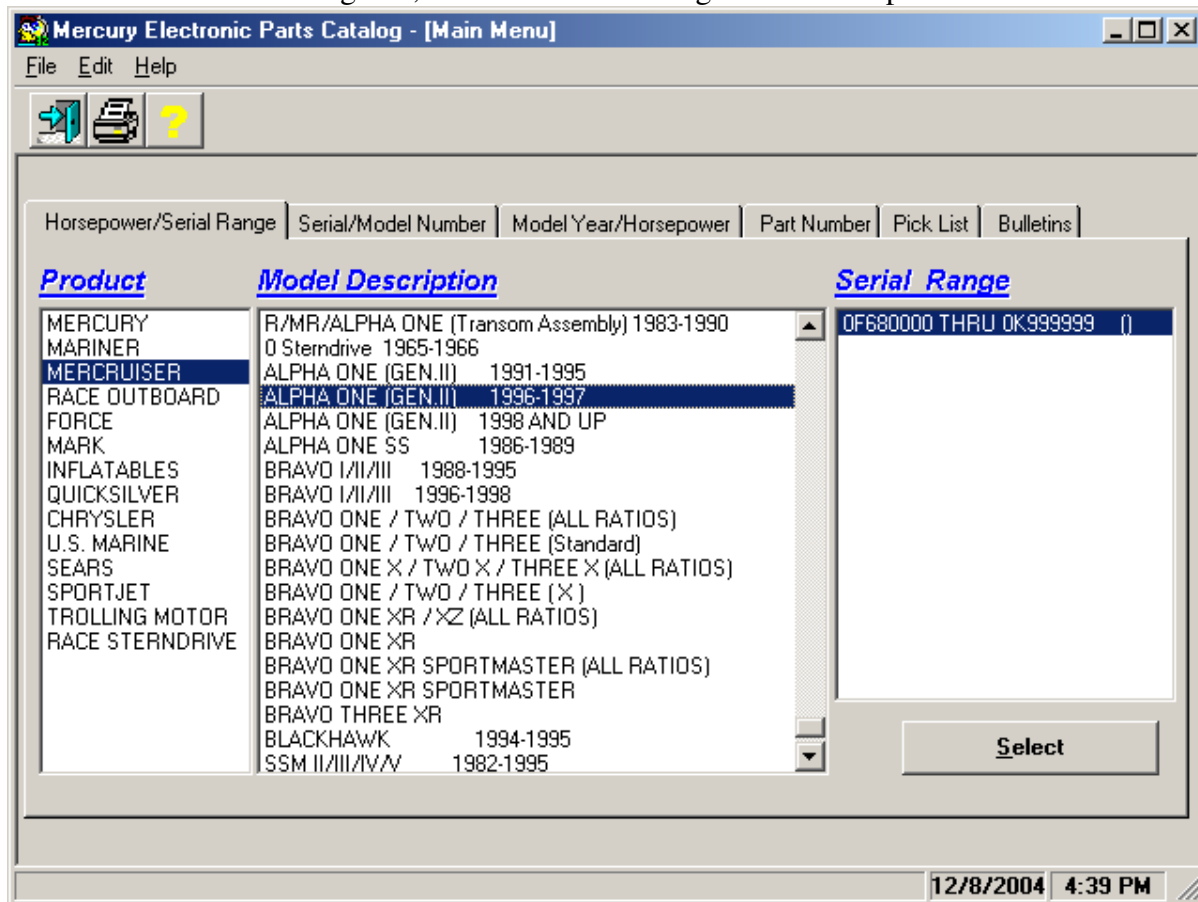
Mercury's Electronic Parts Catalog (EPC) is the way Mercury dealers lookup part numbers when repairing Mercury products. Once installed on your computer, EPC is selected from the windows start menu or an icon on your desktop.



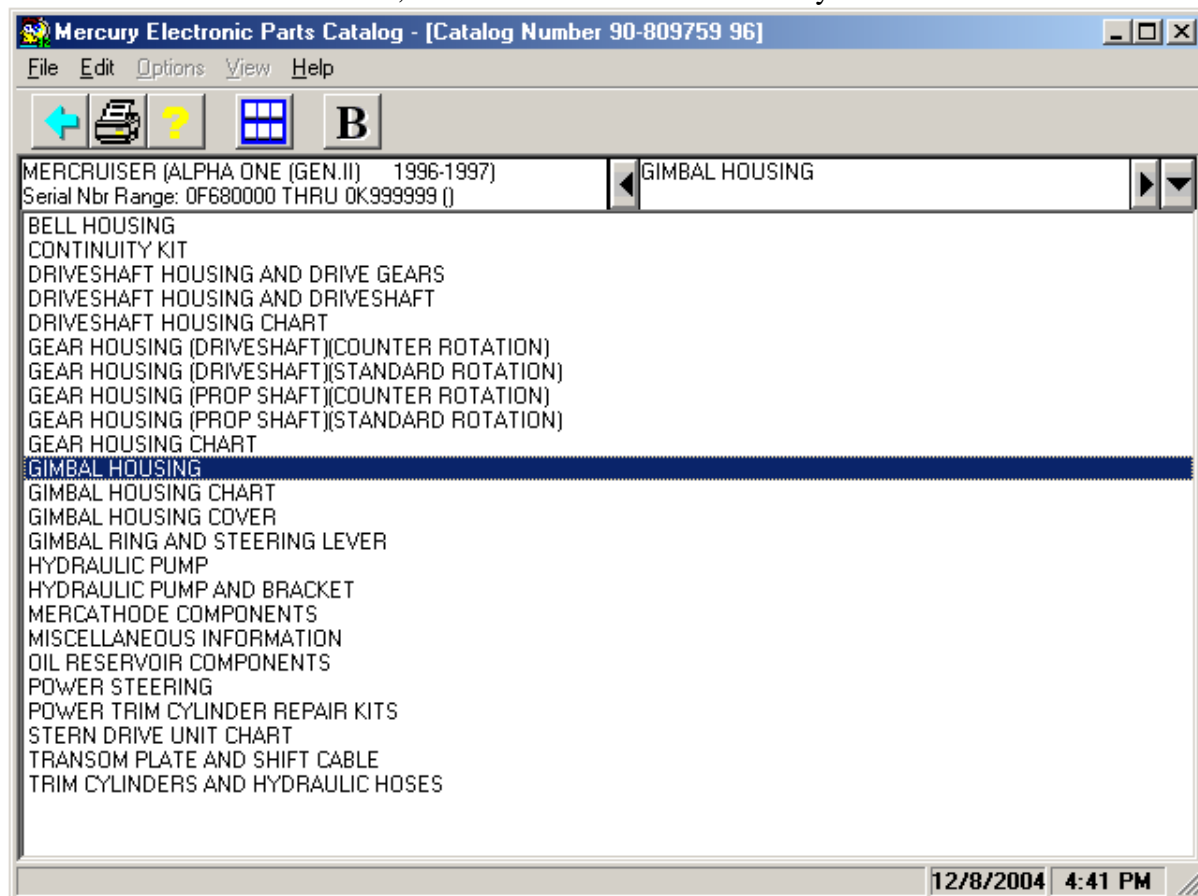
Next you see the intro screen flash... Then you will see the Main Menu...



Let's select something real, like a Gimbal Bearing on a 1997 Alpha One Outdrive...



Once we select the outdrive, we must select the sub-assembly "GIMBLE HOUSING"...



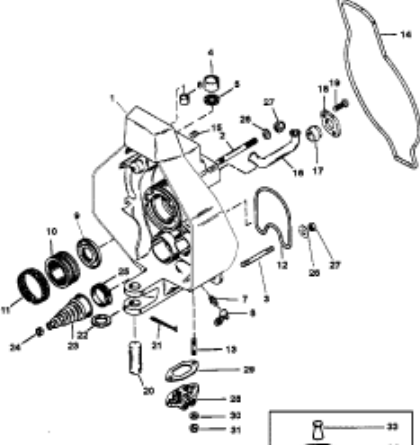
Now we see the fiche image of the gimbal housing and we can select #10, the Gimbal Bearing Assembly...

Mercury Electronic Parts Catalog - [Catalog Number 90-809759 96]

File Edit Options View Help

MERCURISER (ALPHA ONE (GEN.II) 1996-1997)  
Serial Nbr Range: 0F680000 THRU 0K999999 ()

GIMBAL HOUSING



NOTE: FOR CONTINUITY CIRCUIT COMPONENTS, SEE THE "CONTINUITY KIT" SECTION.  
NOTE: ACCESS HOLE PLUG KIT (22-8847A1) CONTAINS ALL NECESSARY PARTS TO ALLOW REMOVAL OF SWIVEL SHAFT WITHOUT REMOVING GIMBAL HOUSING.

Ref	Class	Part	Description
1		43881A14	GIMBAL HOUSING
2	16	56296	STUD (7/16 X 4-3/4 IN.)
3	16	818834	STUD (7/16 X 4-1/4 IN.)
4	23	98357 1	BUSHING-LOWER
5	26	41607 1	SEAL-OIL
6	23	98356	BUSHING-UPPER
7	22	74036	FITTING-GREASE (1/4-28)
8	19	77633	LUBRICAP
9	26	88416	SEAL-OIL
10	30	60794A 4	BEARING ASSEMBLY
11			Part Exceptions
12			ING-TOLERANCE
13			View List Price
14			View Dealer Price
15			Supersession Chain
16			PriceBook
17			Print Parts List
18			
19	10	28636	SCREW (1/4-20 X 3/4 IN.)
20	17	99353	PIN-LOWER SWIVEL

12/8/2004 4:45 PM

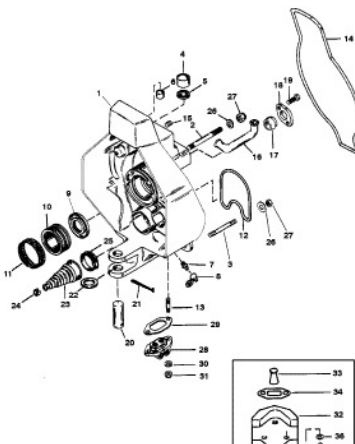
If we right click on the black line that we selected for the gimbal bearing, we can select View List Price...

Mercury Electronic Parts Catalog - [Catalog Number 90-809759 96]

File Edit Options View Help

MERCURISER (ALPHA ONE (GEN.II) 1996-1997)  
Serial Nbr Range: 0F680000 THRU 0K999999 ()

GIMBAL HOUSING



NOTE: FOR CONTINUITY CIRCUIT COMPONENTS, SEE THE "CONTINUITY KIT" SECTION.  
NOTE: ACCESS HOLE PLUG KIT (22-8847A1) CONTAINS ALL NECESSARY PARTS TO ALLOW REMOVAL OF SWIVEL SHAFT WITHOUT REMOVING GIMBAL HOUSING.

Ref	Class	Part	Description
1		43881A14	GIMBAL HOUSING
2	16	56296	STUD (7/16 X 4-3/4 IN.)
3	16	818834	STUD (7/16 X 4-1/4 IN.)
4	23	98357 1	BUSHING-LOWER
5	26	41607 1	SEAL-OIL
6	23	98356	BUSHING-UPPER
7	22	74036	FITTING-GREASE (1/4-28)
8	19	77633	LUBRICAP
9	26	88416	SEAL-OIL
10	30	60794A 4	BEARING ASSEMBLY
11		61075	O-RING-TOLERANCE
12		41802	O-RING
13	16	56766	STUD (1/4 X 1-3/8 IN.)
14		43713	SEAL
15	22	73379	PLUG-PIPE (1/4-18)
16	32	41672 1	TUBE-WATER
17	23	816599 1	BUSHING
18		41673	COVER
19	10	28636	SCREW (1/4-20 X 3/4 IN.)
20	17	99353	PIN-LOWER SWIVEL
21	18	54929	PIN-COTTER
22	12	32518	WASHER
23		74639	BELLOWS-SHIFT CABLE
24	54	38863	CLAMP
25	54	815504320	CLAMP
26	12	34567	WASHER
27	11	34933	NUT (7/16-20)
28		98825A 1	MANIFOLD ASSEMBLY
29	27	98823 1	GASKET
30	13	78968	LOCKWASHER (1/4 IN.)
31	11	13438	NUT (1/4-28)
32		821631A 1	ANODIC PLATE ASSEMBLY
33		12077	SEAL

4:49 PM

Cross Reference System

File View Pictures Help

Huggins Outboard Computer Programs, Inc.

Cross Reference System

Enter part number to search:

VENDOR	PRE	PART NUMBER	DESCRIPTION	COST	LIST
MERCURY...	MER	30-60794A 4	BEARING ASSY-BALL QPD=T*	39.95	79.90
AFT MARINE	AFT	AM803		23.95	N/L
AFT MARINE	AFT	AM8030		N.L.A.	61.65
AFT MARINE	AFT	AM8030I		N.L.A.	61.65
AQUA-POWER	AQU	803		N/L	N/L
GLM PROD...	GLM	21900	GIMBAL BEARING	27.60	46.00
MALLORY...	MAL	9-72410	BEARING, GIMBAL	27.50	55.64
Neutic Pro	MAU	0775536	GIMBAL BEARING	33.95	61.72
EVINRUDE/J	OMC	0508904	L/P 91.15		N/A 97
EVINRUDE/J	OMC	0775536	GIMBAL BEARING	33.95	61.72
EVINRUDE/J	OMC	3853807	BEARING AY	32.64	59.35
REDLINE...	RED	RL2100	GIMBAL BRG (9)	28.50	47.50
SIERRA...	SIE	18-2100	Gimbal Bearing	28.50	47.50
SHI.....	SHI	30794	Bearing	NLA	NLA
SHI.....	SHI	30796	Bearing	NLA	NLA
Tech2o...	TEC	TC30-60794A 4		N/L	N/L
VOLVO.....	VOL	3853807-0	BEARING	33.62	56.03

The Huggins XREF program will pop-up along side of the EPC with the part cross referenced to it's sources. Please call us if you have any questions about XREF or EPC integration. Huggins Outboard (919) 787-1836